



# UniVerse

## Empowering business solutions

### Highlights

- A high performance, highly scalable, embeddable data management system, UniVerse powers applications for small and medium businesses and large enterprises
- Accelerates development and time to market with a new Developer Toolkit
- Provides the performance and robustness necessary for highly available, global computing
- Reduces total cost of ownership by lowering deployment and administration costs
- Delivers web services via many protocols and deployment tools

### UniVerse Extended Relational Database

The world is becoming smarter. In the face of global change our companies, institutions and industries are infusing new intelligence into processes and systems that manage the exchange of goods and services.

A smarter planet demands a smarter computing model. Software developers are being asked to build intelligent, interconnected and affordable new solutions to meet this need. In this demanding environment, a conventional database isn't always enough. Developers need a high-performance, highly scalable, easy-to-use database offering rapid deployment and a rapid return on investment.

UniVerse, built smarter from the ground up, offers a unique combination of an intuitive development environment and a powerful, reliable engine underneath.

In contrast to traditional databases, UniVerse delivers easy-to-understand data modeling and creates fewer tables. Using XML-like data structures, developers can create embedded solutions quickly and easily, and their solutions

reach the market and begin to generate revenues more rapidly.

### Standards-Compliant and Flexible, UniVerse:

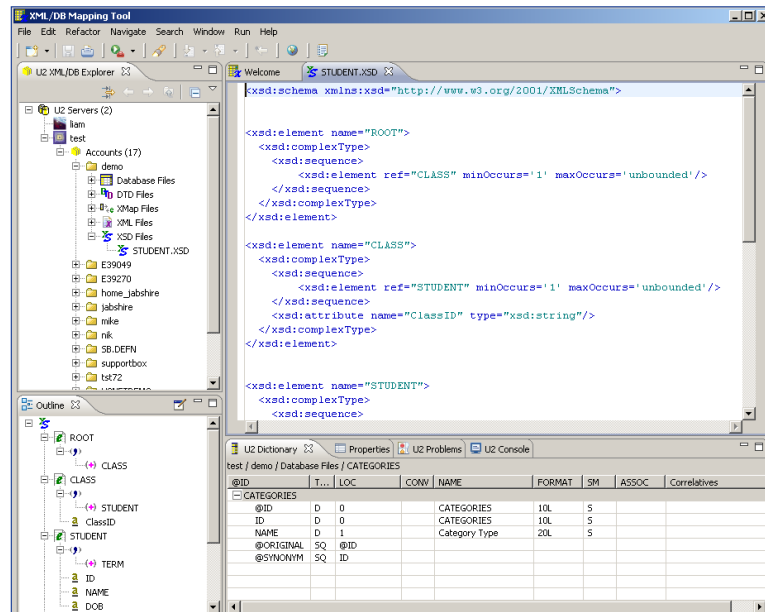
- Provides data access, storage and management capabilities across Microsoft® Windows®, Linux and UNIX® platforms.
- Features a native, record-oriented integrated development environment.
- Scales from the smallest workgroup to thousands of concurrent users.
- Allocates table space automatically and dynamically to optimize performance and minimize disk usage for maximum efficiency.

### Smarter for Less

UniVerse gives administrators the tools they need to streamline DBA tasks. Features include automated administration, maximized use of storage, and effective schema changes. These save time and money during development and during ongoing operations.

Developers also benefit with UniVerse, seeing faster development through the use of the

*Reuse and access U2 business logic from external applications using the U2 Web Services Developer Tool*



## Additional Tools

UniVerse users can benefit from the following development tools:

- U2 Web Development Environment—an object-based application platform for rapid development and scalable deployment of Web applications
- U2.NET—an ADO.NET provider and Microsoft™ Visual Studio add-ins for MultiValue-centric programming in a .NET framework
- IBM.NET—a relational ADO.NET provider for UniVerse and UniData as well as IBM DB2®, and IBM Informix® Dynamic Server. IBM.NET includes SQL-based Add-ins for Visual Studio and supports SSLStream, LINQ, Silverlight, WPF and XAML
- SystemBuilder—a cross-platform, complete, rapid application development environment with flexible, modern deployment and presentation options
- wIntegrate—advanced terminal emulation and application enhancement tool for creating modern user interfaces

### Rocket U2 Office

4600 South Ulster St  
Suite 1100  
Denver, CO 80237  
Tel: (720) 475-8002  
Fax: (617) 630-7349

wIntegrate is a trademark of Rocket Software, Inc. in the United States, other countries or both.

All other products or product names are trademarks or registered trademarks of their respective owners.

integrated development environment and graphical tools, enabling them to develop high-performance applications. Developers can use many open standards, including XML, .NET, Java, SOAP and web services.

### High Availability

The need for 24X7 operations requires resilient, recoverable databases. UniVerse delivers high availability, serviceability and recoverability. Built-in features like dynamic file allocation, online index build and online resize help keep the database working in production and out of maintenance mode. Developers can add fields to existing files without taking the database offline for reorganization.

UniVerse Data Replication offers a simple way to effectively maintain a copy of a production database on a separate server for a failover scenario. This feature also has the advantage of reducing the load on the production server by offloading work such as reporting.

### Security

UniVerse supports Open Secure Sockets Layer (OpenSSL) to create secure communication channels for UniVerse-based applications. SSL is supported in UniVerse Basic programming interfaces as well as in standards-based and native interfaces. SSL provides server authentication, encryption and message integrity and, optionally, client authentication. UniVerse also supports SSLstream, extending SSL support into the .NET environment.

UniVerse Automatic Data Encryption (ADE) was designed to give you a finer level of control to address diverse security and usability requirements. ADE allows you to configure encryption of data at the field or record level, using a selection of encryption algorithms. Encrypted data can be additionally protected with passwords, allowing access only to authorized groups or users

Today's users and administrators have an increasing number of userids and passwords that must be remembered and managed. UniVerse supports pluggable authentication

modules (PAM) and lightweight directory access protocol (LDAP) to enable centralized authentication.

The system administrator can determine how users are authenticated in various situations, allowing UniVerse PAM-aware applications to switch authentication methods without a costly application rewrite.

### Development Tools

The Basic Developer Toolkit (BDT) is a modern, integrated development and debugging tool for UniVerse Basic developers. Based on Eclipse, it provides multiple views with all the information you need to build applications quickly. All of the resources you need are here, including a resource explorer, code editor, dictionary editor, and an integrated debugger.

UniVerse provides several options for integration into the Microsoft .NET Framework. This flexibility allows you to build and deploy a wide variety of Web-based applications that work seamlessly with .NET.

UniVerse supports both standards-based and native .NET API's, including support for the Compact Framework. This allows you to extend your application into the world of handheld devices. Microsoft Windows CE based mobile/embedded devices such as PDAs, mobile phones, factory controllers, or set-top boxes can now be a part of your solution.

UniVerse supports numerous Java-based interfaces as well, including JDBC for standards-based connectivity and our own UniObjects for Java high speed native interface. You can leverage powerful Java programming tools including the Eclipse framework to enable powerful, platform-independent solutions.

### System Requirements

The UniVerse extended relational database solution runs on major hardware platforms running Microsoft Windows, Linux and UNIX.

Please see the U2 Product Availability Matrix at [rocketsoftware.com/u2](http://rocketsoftware.com/u2) for more information.

For more information, please contact your U2 sales representative or U2 Business Partner or visit us online at: [www.rocketsoftware.com/u2](http://www.rocketsoftware.com/u2)

