



REPORTING AND ANALYTICS

Turn your data into business value. Transform your business with deeper insights to better understand your customers, employees, and operations. Equip all departments with the visibility needed to make decisions for today and drive change for the future.



Single Source Of Truth

Connect your information, people and ideas to enable faster and smarter decisions based on deep insights and critical information that is easy to access from a single source of truth. Residing in a single solution that combines finance and operations, the data is reliable and real-time.



Visualise Your Decisions

Create dynamic, responsive visual stories that enable you to drill down for detailed information by individual role or department to act quickly and proactively for improved business performance. Answer business questions on the fly, such as - What happened? Why? What next?



Stand Out Customer Service

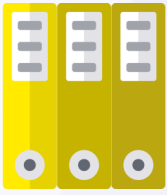
Harness the power of your data to drive success in every area of your business, from improving internal efficiencies to delivering standout customer service and experience. Leverage insights to innovate and differentiate your products and services, and beat the competition.

Whether on-premise, in the cloud, or hybrid environment, Embrace Reporting and Analytics can help you know your business better, plan for the future, and simplify operations. Actionable insights enable you to better serve your customers, create new business models and deliver value to all stakeholders.

Embrace the future today! Take advantage of an innovative, fast, flexible, scalable and easy-to-use business solution that supports your current needs and will promote your competitive edge far into the future.



Business Benefits



Embrace provides comprehensive high quality financial and operational reports and documents. System flexibility ensures that reports can be designed to meet almost any requirement and formatted to suit your company standards. The integrated report writer allows you to produce sophisticated reports, based on the standard Embrace report offering as well as facilitating the creation of unique tailored reports where required. Reports can be output to screen, print, PDF and Excel and exported in multiple formats for third-party use.



Embrace delivers the capabilities, depth of information and insight that your business needs to face the future with confidence. Prebuilt reports and dashboards allow users to drill into successive levels of detail simply by clicking on the item they wish to interrogate. As all information is updated in real-time, at both the financial and transaction level, authorised users can drill down from high-level summaries to discrete details. They can simultaneously monitor multiple KPIs, pinpoint specific information and take proactive, corrective action.



Bring your data to life with embedded visualisations and dashboards that enable real-time responses, fact-based decisions, and clearer visualisation of large volumes of data – opening up entirely new opportunities for your business. Visual data can be expanded and analysed, empowering employee decision-making capability. Drill down into actionable insights and the detail behind each metric by individual role or department to act quickly and proactively for improved business performance.



The Embrace Data Warehouse delivers streamlined views of all data, eliminating the complexity of extracting data from multiple tables into reports and is seamlessly populated with all transaction processing, enterprise-wide, in real-time. The embedded Data Warehouse delivers a simplified data platform for Business Intelligence (BI) and Reporting tools, that enable users to easily access, analyse and present that data in a way that allows the information to be used to amplify insights that help drive strategic decision-making.



Enhanced data sharing and visualisation allows people from across the enterprise, who may not always be from a technical background, to make the best use of company data, reports and analytics. The data can also be accessed from multiple locations and viewed on multiple devices to further enhance real-time decision making. Robust access management ensures that only the information necessary for each user is displayed, while sensitive information is reserved only for those with appropriate access rights.

Our Approach

Selecting an ERP solution that best fits your unique business requirements includes evaluating the service requirements that go hand in hand with deploying an optimised solution. ACS-Embrace ticks all the boxes, going beyond solutions, offering a variety of services to assist you as and when necessary. Dedicated, experienced and expert teams assist with every phase of the project, from the ERP investigation and purchasing cycle, through implementation, training and go-live to ongoing system support.

We believe that Service is the most powerful differentiating factor for businesses today and have aligned our team strategy to meet the demands and challenges in an ever-changing IT and ERP environment, ensuring that we deliver Service Beyond Excellence!

“One of the greatest strengths of Embrace is the visibility, easy access to information and depth of detail the system provides. We can see everything we need to at a glance and pull any report. We trust the information in Embrace!”

**Carlos Morais - Financial Director
Duplex Liquid Meters (DLM)**

Harness the power of big data, business intelligence and analytics for profitable growth.

Respond quickly to changing market conditions with built-in sophisticated analytics and reporting. Access a single source of truth to create visualisations, dashboards and apps that answer your company's most important questions. Empower users to see the whole story that lives within their data, so that they are more informed and boost their ability to act and react.



Leverage data-driven insights to fuel your digital transformation.

Your data is one of your most valuable assets. Make the most of it, with business analytics tools and embedded machine learning. Gain fast, intelligent insights, adapt on the fly and stay one step ahead of the competition.

Prepare for tomorrow. Future-proof for the Internet of Things (IoT), Big Data, Analytics and the next wave of technological disruption.

Fast-track your ability to make use of all your organisation's complex business, human and machine data.

Maximise intelligence with powerful analytic capabilities that can deliver traditional reporting as well as power machine learning and artificial intelligence (AI).

Enable real-time, data-driven decision-making across your business, from the shop floor to the top floor, to improve the customer experience, increase loyalty and drive incremental revenue.

Data is the new currency that runs the economy. It has completely transformed how companies do business. Taking full advantage of data insights with a solid analytic strategy can help the entire company run more efficiently, productively, and profitably.

From pixel perfect financial reporting to highly visual dashboards, Embrace delivers timely information to help you make critical business decisions to grow your business.

Make smarter data-driven decisions to tackle tougher competition, tighter margins, evolving processes and market-entry barriers. Enable users to do more with less as they analyse insights, plan strategies, predict outcomes and collaborate within an integrated experience.

Transform your data into insights that can help guide future strategies, pinpoint the source of subpar performance and deliver disruptive business models.

Transform your business with deeper insights to better understand your customers and operations. Optimise operational performance and drive down costs by managing processes, reducing risks, and improving supplier and contract management.

Equip all departments and business units with the visibility they need to make decisions for today and drive change for tomorrow.

Whether on-premise, in the cloud, or hybrid environment, Embrace Reporting and Analytics can help you know your business better, plan for and predict the future.

Visualise and analyse key data and insights across all areas of your business. Accelerate decision making with reporting tools that deliver customised views of your business to every company, department and business unit across your business.

**Comprehensive
Standard Reports**

Embrace provides comprehensive high quality financial and operational reports and documents, with dynamic charts and visual analysis capabilities. System flexibility ensures that reports can be designed for almost any requirement.

Report Writer

The integrated report writer allows you to produce sophisticated reports, based on the standard Embrace report offering as well as facilitating the creation of unique tailored reports as required. Reports can be output to screen, print, PDF and Excel and exported for third-party use.

**Role Based
Reporting**

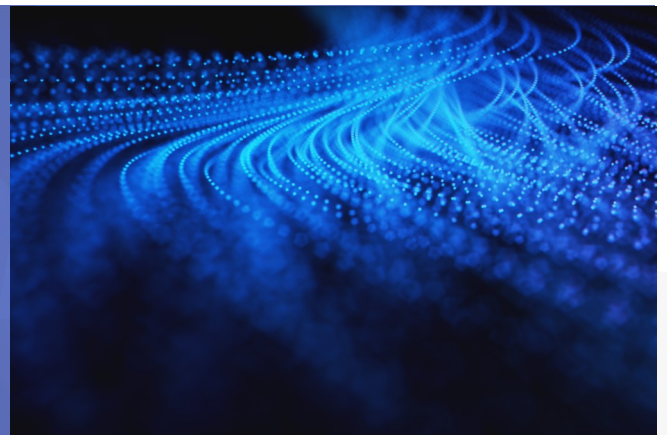
Reports can be tailored to meet the information needs of all roles in your enterprise, ensuring that sensitive information is only shared with individuals who have appropriate access. Provide access to real-time dashboards that display essential information by role or department.

**Embedded
Reporting Tools**

Easy to use, built-in tools enable Embrace screens, reports, queries and job streams to be easily tailored to your specific environment, without impacting on future software upgrades, ensuring cost savings and rapid return on investment.

“Embrace reports are comprehensive, easy to access and meet our complex reporting requirements. The information is detailed and accurate, enabling informed mission-critical decisions to be made quickly and with confidence.”

Mark Knight - Financial Director
Belting Supply Services



**Automated
Report Delivery**

Timeous delivery of reports and documents is critical to making informed decisions. Each user can have their own access level and delivery schedule according to their individual needs while multiple users can access reports simultaneously.

Business Insights

Provides real-time insight into key performance information and the means to act quickly and make proactive business decisions. Drill down into insights and the detail underlying each metric by individual, business function or department.

Leverage the immense power of your business data to drive business growth and increase agility. Automate critical processes to gain increased visibility and insight into your business performance. Empower users with actionable business-critical insights for quicker analysis, decision making and execution.

Executive Dashboards

Provides an interactive visual representation of real-time data, enabling managers to measure and monitor business performance and answer their next business question. A number of predefined dashboards are provided for, from which you can drill down into the detail.

Analytics

Access the information you need to make decisions which impact your customers, sales, profits, business operations and growth opportunities. Drill down to detailed analysis to analyse the breakdown of income statements, balance sheets and trial balance across cost centres.

**Embrace
Data Warehouse**

Provides a simplified data platform for Business Intelligence (BI) and Reporting tools, that enables users to easily access, analyse and present that data in a way that allows the information to be used to amplify insights that help drive strategic decision-making.

Data Storytelling

Use analytics to create and present guided stories, rich with narrative and graphics, to communicate insights and facilitate discussion. The data takes centre stage, keeping everyone on the same page all the time.

**Customer
360° View**

Bring together disparate data sources to create an on-demand, complete analytical view across all customer channels, to enable a deeper understanding of buyers, brands, products and services.

Single Solution

Make faster and smarter decisions with actionable insights and end-to-end analytics capabilities in a single solution. Deliver real-time, actionable information to the people who need it anytime and anywhere, to keep your business moving forward.

Faster, Smarter Decisions

- Enable live, real-time data-driven decision making across your business, from the shop floor to the top floor
- Have all the analytics capabilities you need at your fingertips
- Deliver intuitive and engaging information personalised for each individual, on any device
- Future proof your business





Spend more of your time analysing data, and less time preparing and managing that data. Embrace does that for you – it's all part of the package!

Obtain your business information in a form that you can use straight away without having to load data, construct queries, or create reports. .

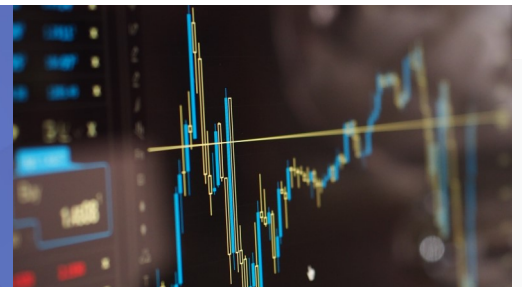
Amplify insights with Embrace dashboards and visualisations. View key information at a glance with real-time dashboards, customised by individual, role or department. Monitor current financial, operational and organisational information. Highlight outliers, analyse trends and review KPIs that relate to your job, drill down into the detail and make critical decisions based on accurate, real-time data.

All Embrace reports, visualisations and dashboards are mobile-ready and will display on any web-enabled device.

Enhanced data access and extended analysis enables you to make more informed decisions about how to decrease costs, grow revenue, and improve profitability.

WHY EMBRACE ERP

- Single, end-to-end, integrated ERP Solution
- Consumer-grade user experience with role-based homepages and workflows
- A multi-company, multi-site, multi-currency solution
- Deployment in the cloud, on-premise or in a hybrid environment
- Scalable, flexible, agile and suitable for businesses of all sizes
- 100% implementation track record ensures low total cost of ownership and quick time to value



“Embrace has proven to be the right choice for controlling costs, optimising the use of people, maximising revenue and making investment decisions that help grow the company.”

Geoff Balshaw - CFO - CEG Group

Complement and extend the reporting capabilities within Embrace with third-party (BI) Business Intelligence, predictive analytics and modelling tools. These solutions deliver a set of pre-packaged applications called Accelerators, which come bundled with a rich set of pre-built metadata, out-of-the-box reports and dashboards to ensure quick deployment and ease of use.

As business models become more data-driven, the way in which you collate, manage and analyse your data is more important than ever. The insights it can provide through advanced analytics will be your most powerful tools in driving innovation, engaging customers and boosting efficiencies. They will equip you to compete and succeed – in entirely new ways.



011 275-2000 | info@embrace.co.za | embrace.co.za

ACS House, 370 Rivonia Boulevard North, Rivonia, South Africa

